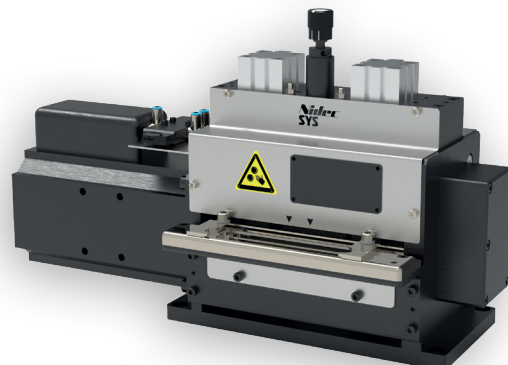


SYS

A NIDEC PRESS & AUTOMATION CO.

HIGH-PRECISION FEEDS



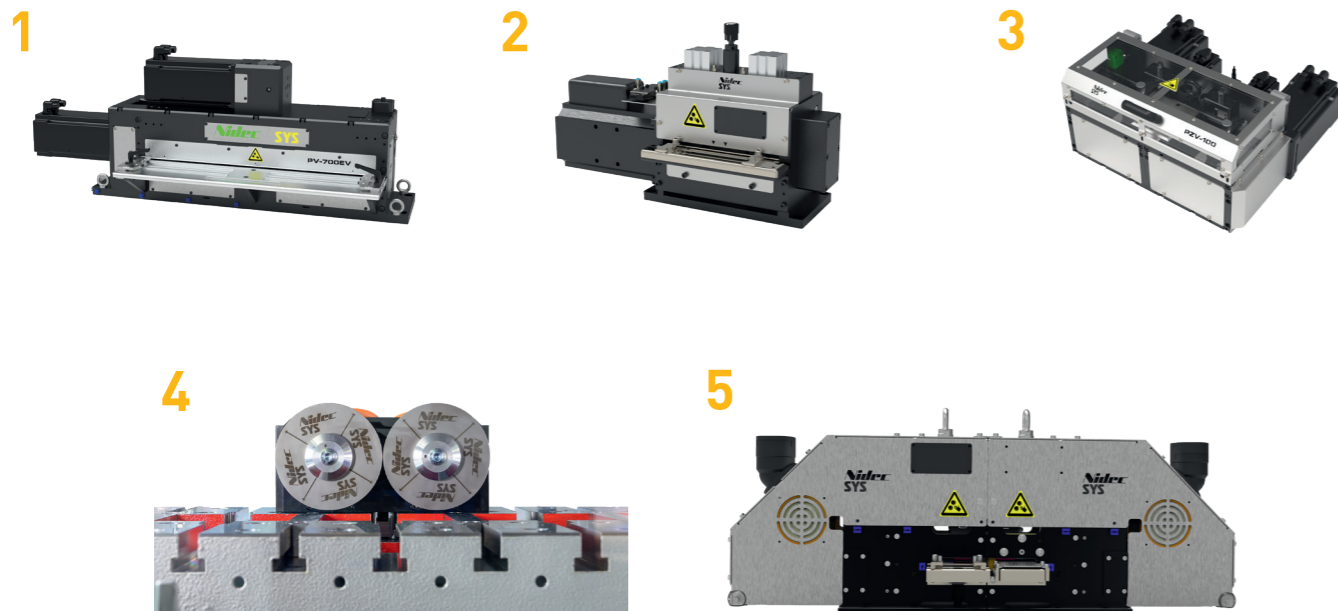
PRODUCT OVERVIEW

Our feed systems represent the highest levels of precision, reliability, and flexibility in the stamping process. Each series is available in multiple sizes and can be individually customized to meet your specific requirements. This results in a perfectly matched feeding concept for every application – from the finest precision of stamped parts to highly dynamic high-volume production.

Robust components, intelligent control technology, and an ergonomic operating interface ensure maximum process reliability, short setup times, and consistent repeatable accuracy.

Our feeding solutions increase the productivity of your system, reduce downtime, and enable high part quality – stroke after stroke.

- 1 PV-Series
- 2 AV-Series
- 3 PZV-Series
- 4 Sprockets
- 5 Tandem Feed Systems



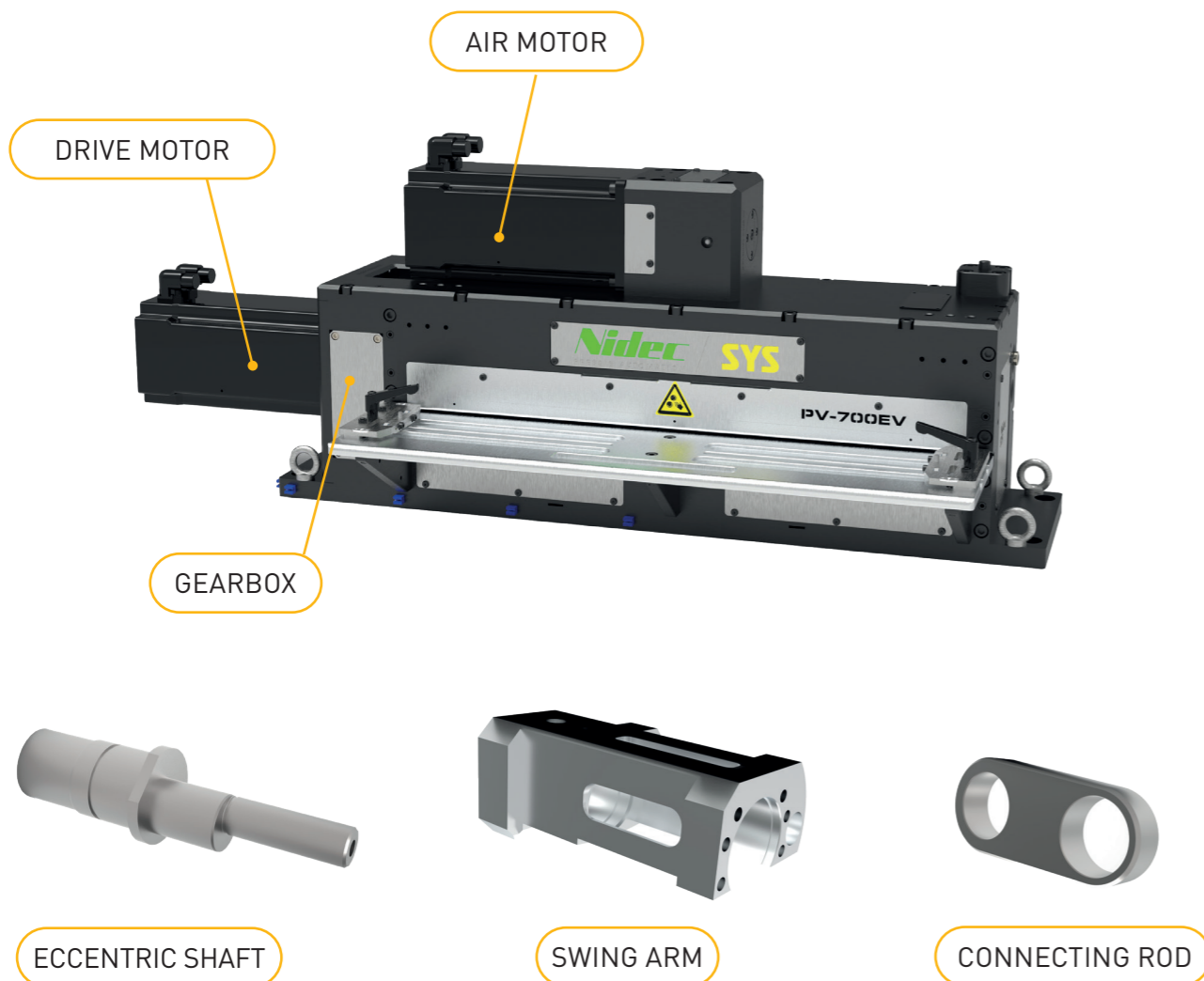
PV-SERIES

Precision Feed

- Can be used as right or left feed
- Quick-change system for feed rollers
- Infeed with scale for lateral adjustment
- Can be used in push-pull mode
- Compact design
- Adjustable lifting height
- Sensor for strip end monitoring

Options

- Profiled rollers
- Rollers with special coating
- Strip thickness measurement



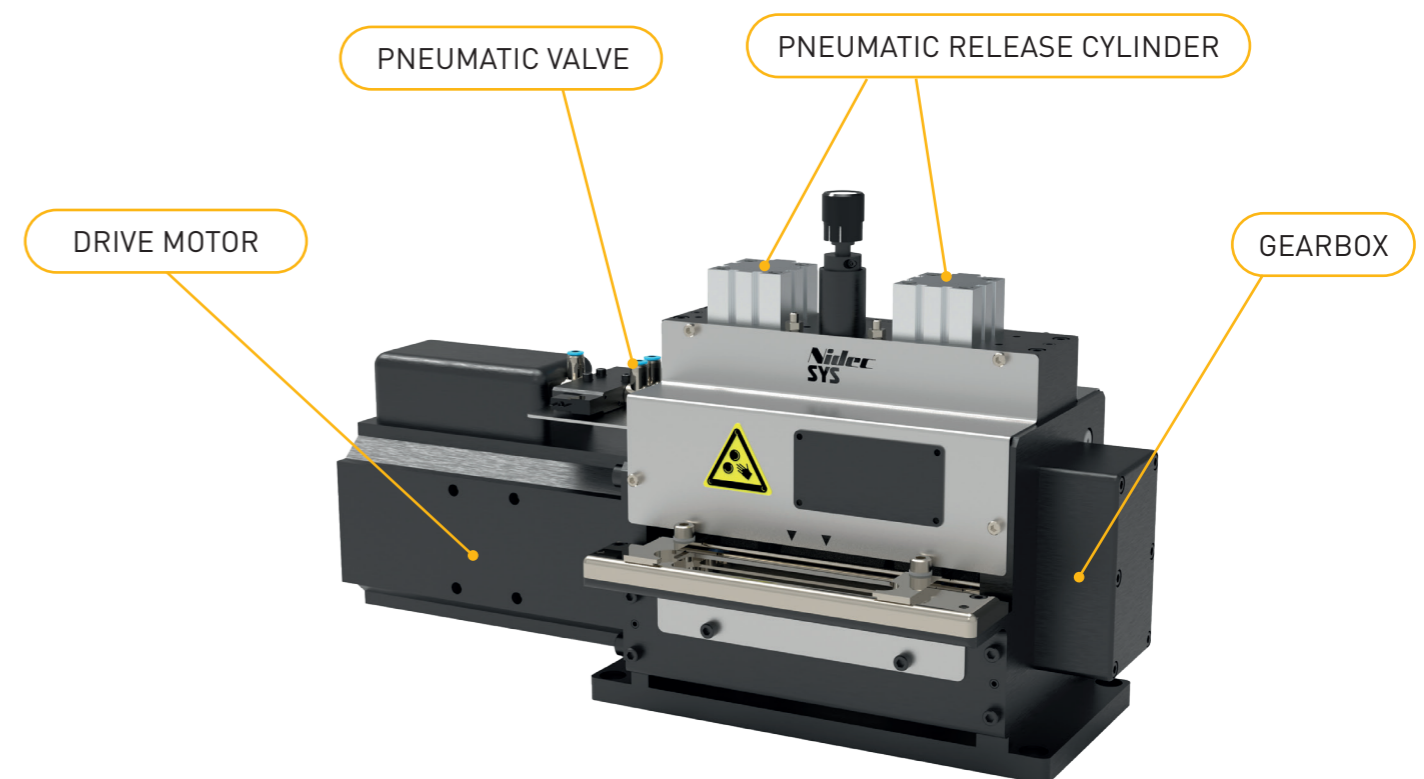
AV-SERIES

Air Feed

- Can be used as right or left feed
- Can be used as push-pull
- Compact design
- Adjustable lifting height
- Sensor for strip end monitoring

Options

- Profiled rollers
- Rollers with special coating



PZV-SERIES

Gripper Feed

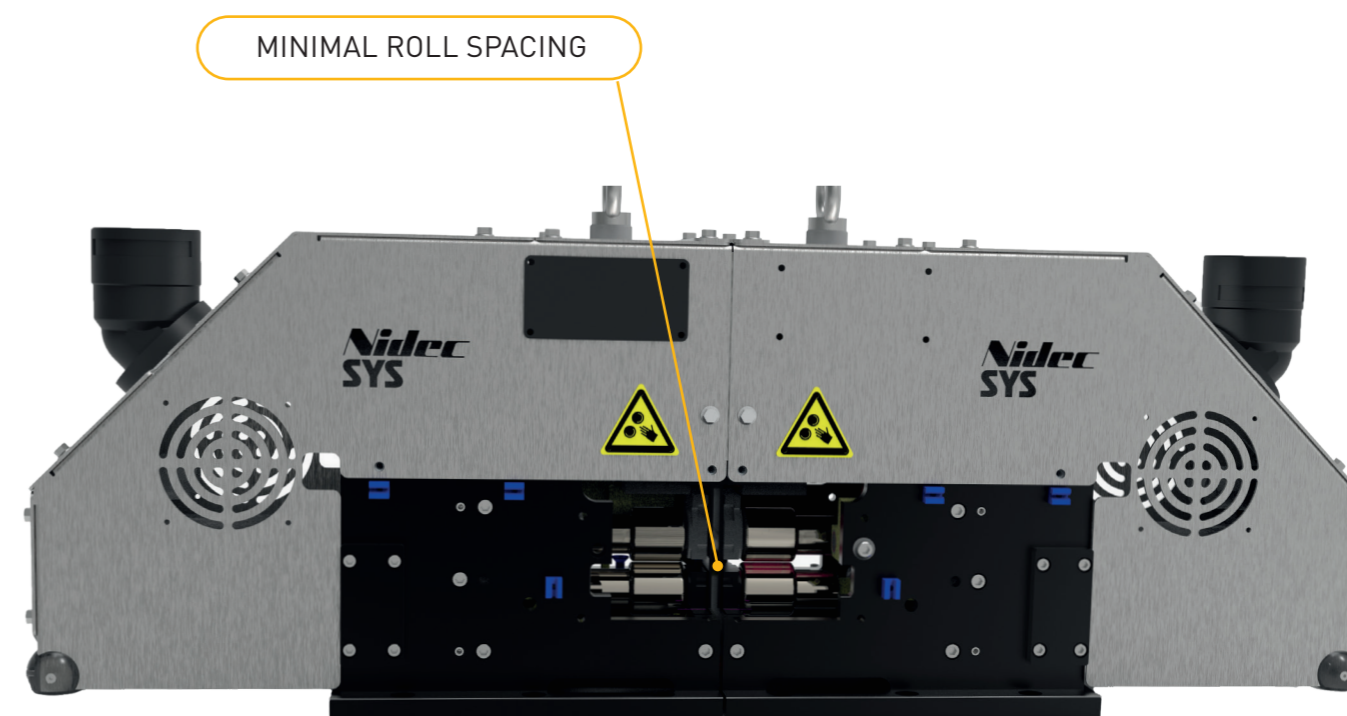
- Feed clamps with AC servo drive motor
- Roll release unit with eccentric and AC servo drive motor
- Strip guide



TANDEM FEED

Precision Feed

- Can be used as a left-hand or right-hand feed
- Suitable for push-pull operation
- Compact design
- Adjustable release stroke
- Sensor for strip end monitoring



SPROCKETS

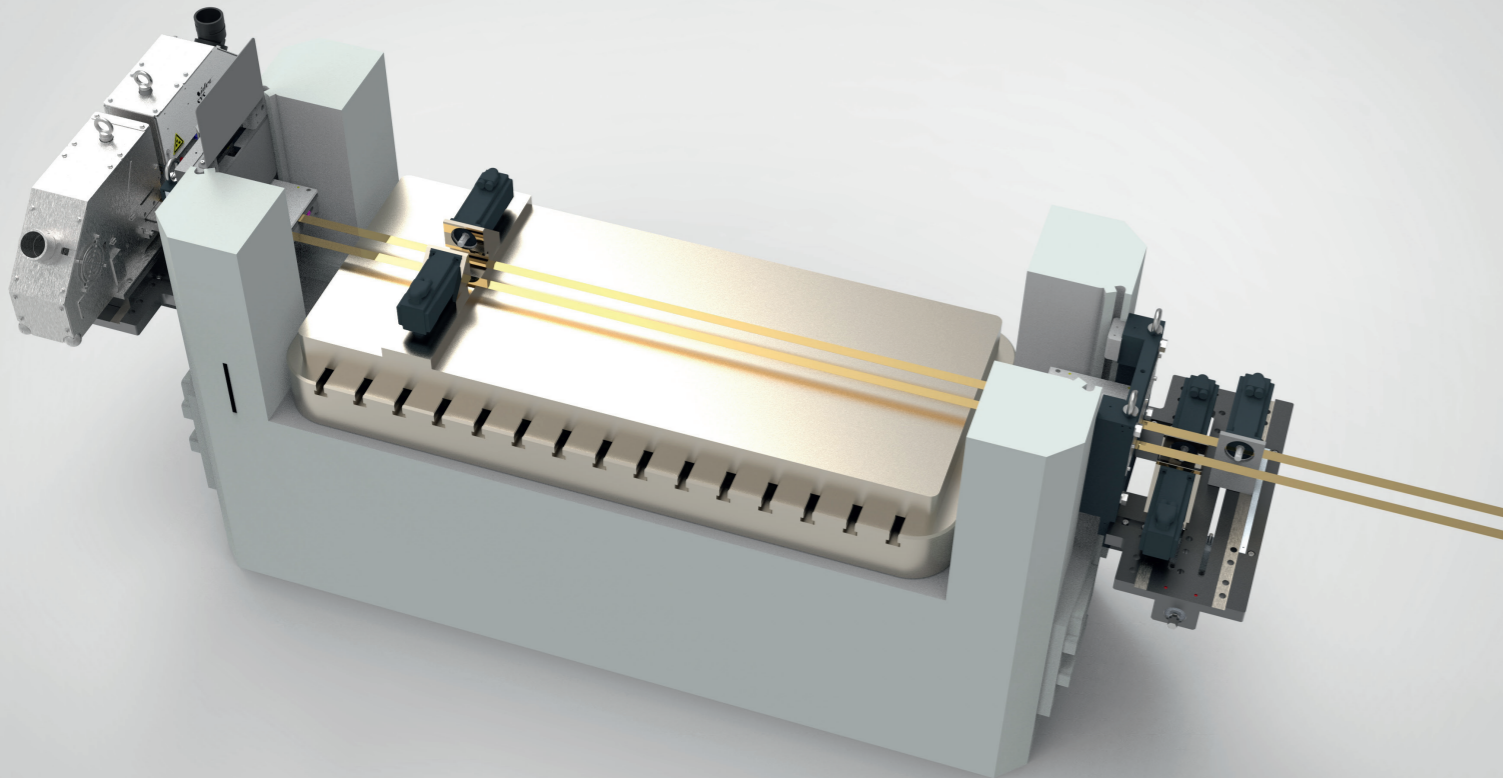
Control of integrated synchronous sprocket axis

- Programmable feed lengths in mm or pitches
- High process reliability via integrated current monitoring
- Initialization to an adjustable reference point
- Custom-engineered guides with integrated sprocket axis

Optional integration as a push-pull system

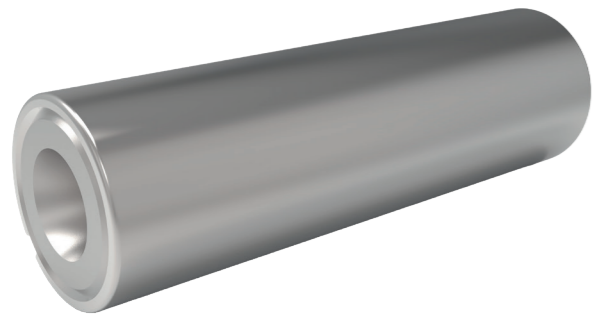
Option

- Pneumatic lifting unit



FEATURES

Exchange Rolls



Segmented Rolls



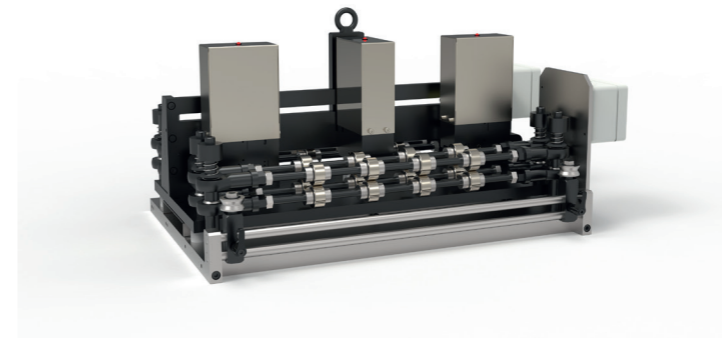
Customized infeed and outfeed



Integrated strip thickness measurement



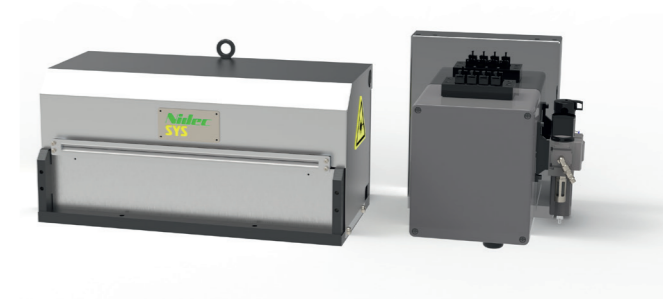
Strip Thickness Measurement BDMS



Features

- Analog or digital contact sensors
- Up to four measuring points

Strip Thickness Measurement BDML



Features

- Non-contact laser differential measurement
- Up to four measuring points

BDMS

Strip Width (max.)	200-600 mm
Strip Thickness (max.)	1.5 mm
Strip Thickness (min.)	0.05 mm
Accuracy	±0.001 mm

BDML

Strip Thickness (max.)	200-600 mm
Strip Thickness (max.)	1.0 mm
Strip Thickness (min.)	0.05 mm
Accuracy	±0.001 mm

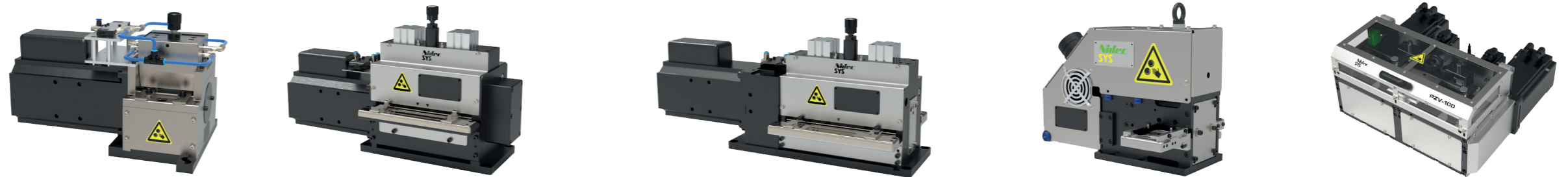
FEED SYSTEMS OVERVIEW



Type		PV-100	PV-200	PV-300	PV-450EV	PV-600-EV	PV-700EV	PV-100HD	PV-200HD	PV-300HD	PV-450HD	PVS-300 (TWIN-POWER)		PVS-350 (TWIN-POWER)	
Max. bandwidth	mm	100 (150)	200	300	450	600	700	100 (150)	200	300	450	300 (335)		350 (385)	
Band thickness	mm	0,05 - 2			0,05 - 1		0,05 - 1	0,05 - 4,2				1-6 (St)	1-12 (Al)	1-6 (St)	1-12 (Al)
Roll diameter	mm	65					65					110		115	
Roll width	mm	60	130	210	360	510	610	60	130	210	360	310		360	
Roll coating		SYS2 (Rz 15)			Polished (Rz 2 - 4)		Polished (Rz 2 - 4)	SYS2 (Rz 15)			Polished (Rz 2 - 4)	SYS2 (Rz 15)			
Feed accuracy	mm	± 0,02					± 0,02					± 0,02			
Weight	kg	145	160	175	250	290	320	145	160	175	250	350		370	
Quick change feed rolls	yes / no	yes					yes					yes			
Both rollers are driven	yes / no	yes					yes					yes			
Servo motorized airing	yes / no	yes					yes					yes			
Can be used as tandem	yes / no	no					no					no			
Segmented / profiled design	yes / no	yes					yes					yes			

FEED ROLL COATING ON REQUEST

FEED SYSTEMS OVERVIEW



Type		AVM-50	AV-40	AV-120D	AV-150D	AV-200D	AV-300D	AV-450S	AVS-300 (TWIN POWER)	PVC-30	PVG-30	PV-60	PV-85	PZV-100	
Max. bandwidth	mm	50 (54)	40 (65)	120 (135)	150 (170)	200 (235)	300 (335)	450 (470)	300 (335)	50 (65)	on request	60	85	80	
Band thickness	mm	0,05 - 1 (3)	0,05 - 2				0,05 - 2	0,05 - 2 (4,5)	1 - 6 (St) 1 - 12 (Al)	0,05 - 1,5	0,05 - 1	0,05 - 2 (4)		0,05-2	
Roll diameter	mm	20,5	54,8	54,5			54,5	62,4	110	35,5		59,8		-	
Roll width	mm	50	47	40 (57)	75 (92)	80	180	130	310	35/45 (65)		65	68	80	
Roll coating		Polished (Rz 2-4)	SYS1 (Rz 4-6)			SYS2 (Rz 15)	SYS2 (Rz 15)	Polished (Rz 2-4)	SYS2 (Rz 15)	SYS1 (Rz 4-6)				-	
Feed accuracy	mm	± 0,02					± 0,02				± 0,02			± 0,02	
Weight	kg	5	35	40	50	45	55	200	345	45		100		130	
Quick change feed rolls	yes / no	no			yes		yes				yes			yes (gripper)	
Both rollers are driven	yes / no	no		yes			yes				yes			yes (gripper)	
Servo motorized airing	yes / no	no					no				yes			yes	
Can be used as tandem	yes / no	no			no		no				yes	no	yes		
Segmented / profiled design	yes / no	yes			yes		yes				yes			yes	

FEED ROLL COATING ON REQUEST

