

KYORI

A NIDEC PRESS & AUTOMATION CO.

TVX

HIGH SPEED PRECISION & LAMINATION STRAIGHTSIDE PRESSES

2000 - 3300 kN

220 - 300 US Tons Capacity



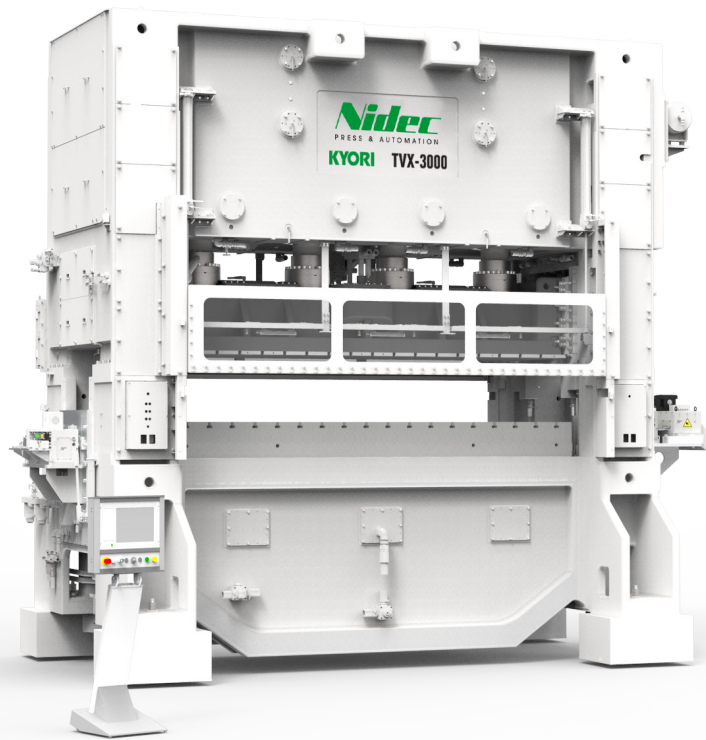
EQUIPPED WITH **SYS** TECHNOLOGY

BULLETIN 200

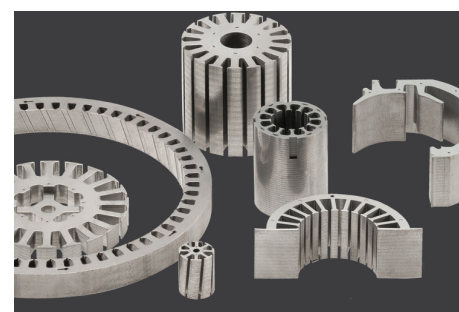
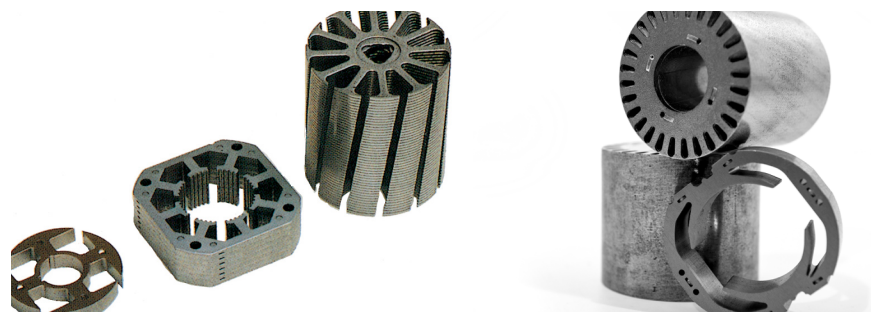
PRODUCT OVERVIEW

The TVX Press Series from Nidec Kyori offers stampers consistent performance necessary for motor core and lamination applications with key control features from Nidec SYS.

Kyori presses have earned a reputation for high precision, high performance and ease of operation from users all around the world offering table lengths of up to 3300 mm.



- 1 Power transmission is achieved through an eccentric crankshaft
- 2 Multi-plunger design on slide of crown connection ensures even slide force and low deflection
- 3 Equipped with industry preferred control technology from Nidec SYS
- 4 Highly efficient drive technology ensuring lower Co2 footprint
- 5 Customized customer solutions with standard components
- 6 Industry 4.0 capable via OPC-UA interface



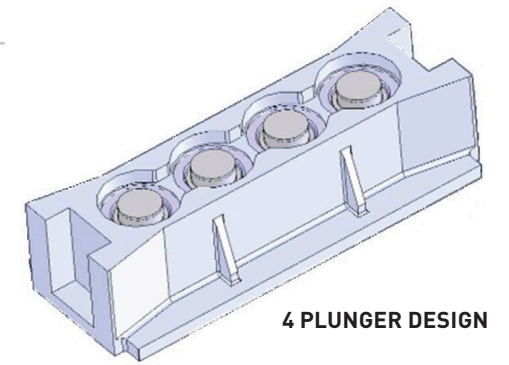
ADVANTAGES OF TVX MODELS

Robust Design

Press body made of cast iron ensures exceptional compressive strength and vibration dampening.

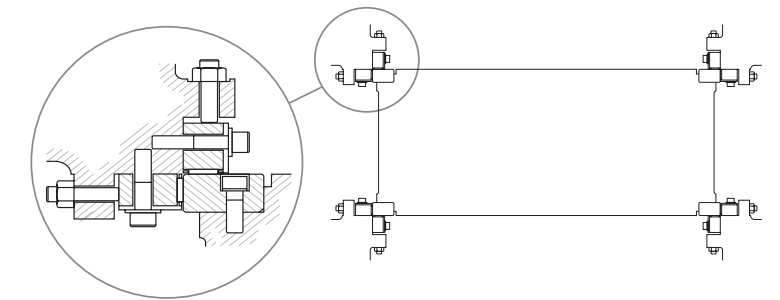
Multi-Plunger Design

- Three plungers for 2000W
- Four plungers for 3000W & 3300-330/370



8-Point Slide Guiding

8-point needle roller bearing, installed in long guideways to prevent the ram from tilting under off-center loads.



Dynamic Balancer

The dynamic balancer feature allows the press to be operated at full speed with minimal inertial effect and vibration.

Selectable Fix Stroke

Selectable fix stroke for flexible applications.

NIDEC SYS CONTROL

PCS 100

With a versatile product portfolio, Nidec SYS offers a turnkey solution for rotor-stator production thanks to its unique modular control concept:

- Powerful Nidec SYS press control
- Integrated, synchronous scrap cutter
- Integration of servo feeds in push or push/pull version

Options:

- Strip-thickness-measuring-system
- Package height measurement
- Integration of further peripheral devices (e.g. strip lubrication systems)

Features:

- Highly efficient, water cooled AC servo main motor
- Powerful stacking control with AC servo drives from 11.4 Nm to 150 Nm
- OPC UA interface 4.0
- Precision servo feed can be adapted to push-pull
- Integrated height measurement of the stack in the lift and lowering unit



LAMINATION FEATURES

Powerful PC-controlled manufacturing system designed for lamination / EV-rotor-stator production consisting of:

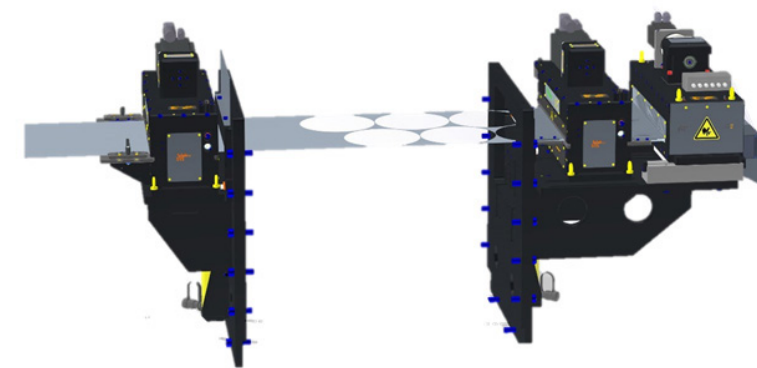
Lamination die controller

FEED PV-450-EV / PV-600-EV / PV-700-EV

- Compact design
- Push-pull applicable
- Quick change system for feed rollers
- Strip infeed with scale for lateral adjustment
- Fast servo-motorized roll release

SCRAPCUTTER ASV-600 /ASV-700

- Compact design
- Strip hold-down
- Cutter blades made of carbide
- Pneumatically switchable longitudinal knife
- Fast servo motor drive



SPECIFICATION & DIMENSIONS

		SYS	TVX-2000M -1700	SYS	TVX-2000W -2000	SYS	TVX-3000M -2300	SYS	TVX-3000W -2700	SYS	TVX-3300 -330	SYS	TVX-3300 -370
Fixed Stroke													
Press Force	kN		2,000		2,000		3,300		3,000		3,300		3,300
Number of Connecting Rods	pcs		2		3		2		4		4		4
Tool Loading Area (L-R)	mm		1,700		2,000		2,300		2,700		3,300		3,700
Adjustable Stroke	mm		25 / 30		25 / 30		25/30		25/30		30/40		30/40
Strokes Per Minute	SPM		100		100		200		100		100		100
Strokes Per Minute <i>(stroke length dependant)</i>	SPM		450/450		500/500		410/410		450/450		360/300		360/300
Main Voltage (EN60204)	V		400		400		400		400		400		400
Main Frequency	Hz		50/60		50/60		50/60		50/60		50/60		50/60
Control Voltage	VDC		24		24		24		24		24		24
Drive Power of Main Motor	kW		63		63		84		84		84		84
Ram Adjustment Range	mm		60		60		60		60		60		60
Shutheight (Standard)	mm		440		440		440		440		520-620		520-620
Bolster Area (L-R x F-B x H)	mm		1,700 x 950 x 240		2,000 x 1,000 x 240		2,300 x 1,000 x 240		2,700 x 1,000 x 240		3,300 x 1,000 x 240		3,700 x 1,200 x 240
Bolster Plate Opening (L-R, F-B)	mm		1,400 x 300		1,700 x 300		1800 x 350,		2,400 x 350		3,000 x 450		3,200 x 450
Base Plate Opening (L-R, F-B)	mm		1,400 x 350		1,700 x 350		2,000 x 400		2,400 x 400		3,000 x 500		3,200 x 500
Bridge at Bed Opening			no		no		no		No		No		No
Ram Area (L-R, F-B)	mm		1,700 x 650		2,000 x 800		2,300 x 800		2,700 x 1,000		3,300 x 900		3,700 x 1,000
Max. Upper Die Weight	kg		1200		1300		1,500		2,000		3,200		4,000
Stip Inlet Height from Bolster	mm		100-140		100-140		100-140		100-140		100-140		100-140
Max. Strip Inlet Width (Machine)	mm		510		510		510		550		-		-
DIMENSION													
Press with Kyori Feeder (L-R, F-B)	mm		3,600 x 2,400		4,150 x 2,130		4,530 x 2,540		4,700 x 2540		5,500 x 2,740		5,900 x 2,740
Height	mm		4,400		4,400		5,020		4,700		5450,		5,450
Weight	kg		48,000		50,000		65,000		75,000		130,000		140,000
Strip Inlet Unit			PV - 200-450		PV - 200-450		PV-200-450		PV-200-600		PV-200-700		PV-200-700

KYORI

A NIDEC PRESS & AUTOMATION CO.

nidecpa.com